

LAS IGUANAS

BLACKPOOL

CONCEPT VISUALISATION

LAS IGUANAS BLACKPOOL
Shopfront



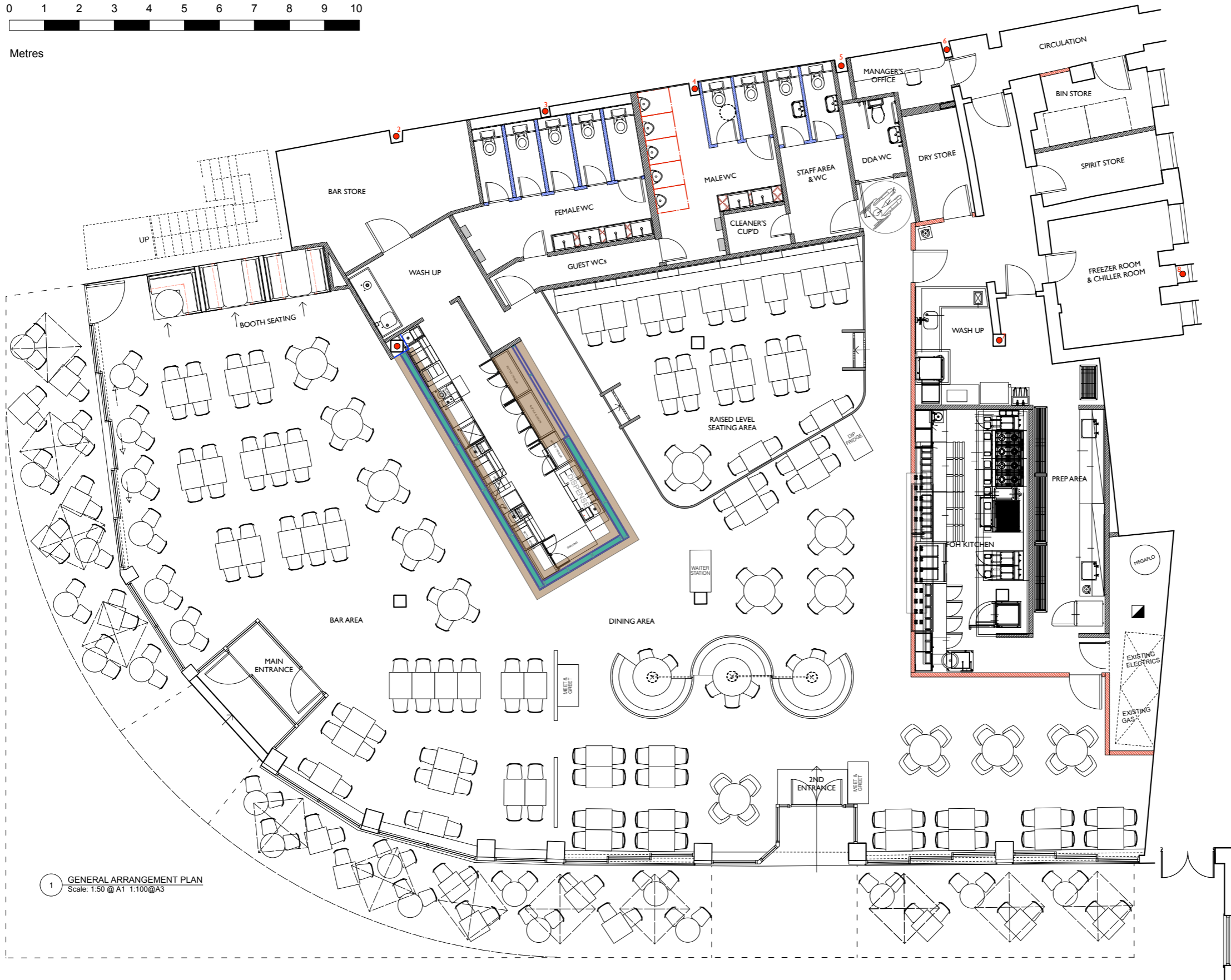
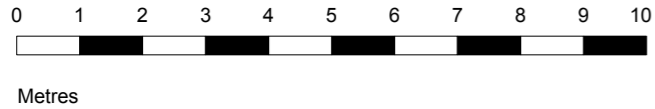
EXPOSED BULBS

DISTRESSED PAINT FINISH

*'EAT LATIN DRINK LATIN'
OR EQUIVALENT BRAND
MESSAGE TBC*

LAS IGUANAS BLACKPOOL

General Arrangement



1 GENERAL ARRANGEMENT PLAN
Scale: 1:50 @ A1 1:100 @ A3

COVERS	NEWPORT
Bar	99
Dining	124
Total	223
External seating	64

THIS DRAWING IS UNDER COPYRIGHT AND NO PORTION SHOULD BE USED WITHOUT PRIOR CONSENT. USE FIGURED DIMENSIONS ONLY. ALL FIGURED DIMENSIONS SHOWN ARE TAKEN FROM FINISHED SURFACES. ALL DIMENSIONS AND LEVELS MUST BE CHECKED ON SITE AND ANY INCONSISTENCIES REPORTED IMMEDIATELY TO B3 PRIOR TO PUTTING WORKS IN HAND.

REVISIONS:

CODE	DATE	DESCRIPTION
A	01.06.15	PLAN AMENDED FOLLOWING SURVEY
B	23.06.15	NEW LAYOUT

B3 DESIGN JERS

83 Designers Ltd
Studio 302, Macmillan Wharf
10 Water Street
London E1 6 3JG
Tel: +44 (0)20 7728 8111
Fax: +44 (0)20 7728 8134

PROJECT NO: 986 CLIENT/PROJECT: LAS IGUANAS BLACKPOOL

SITE ADDRESS:
65-74 PROMENADE
2-4 CHURCH STREET
BLACKPOOL
FY1 1HH

DATE: 01/07/2015 DRAWN: LP CHECKED: MB SCALE: Scale 1:50 @ A1

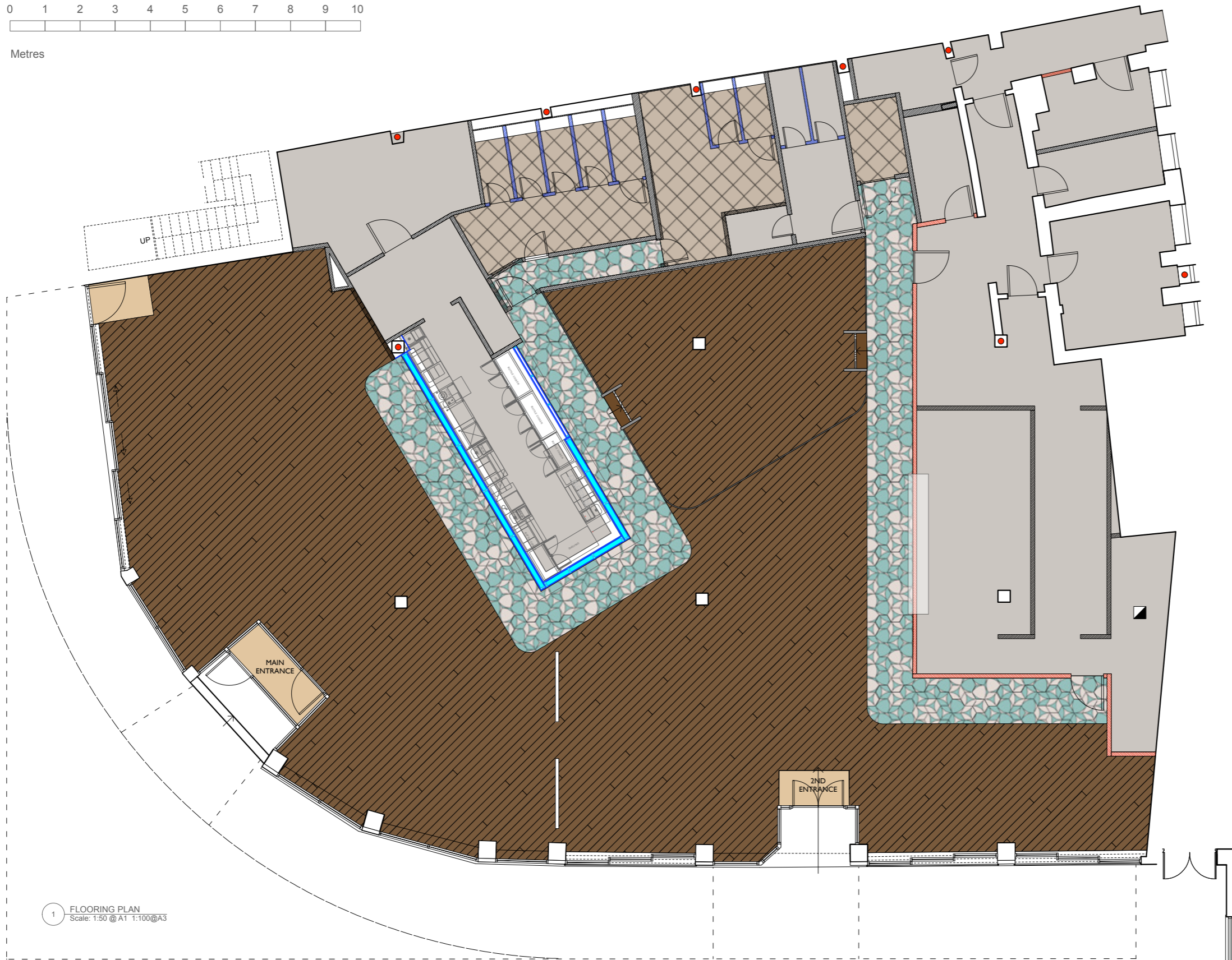
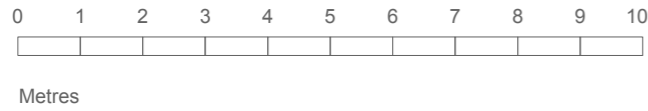
TITLE:
GENERAL ARRANGEMENT PLAN

STATUS:
TENDER

DWG. NO: **986-100** REV: **B**

LAS IGUANAS BLACKPOOL

Floor Finishes Plan



KEY

FF 01		ENTRANCE MATT JAYMART - INGENIUS RANGE IN TAN
FF 02		MOSAIC DEL SUR GRANITO HEXAGON TILE 200MM X 230MM COLOUR G09 & G29
FF 03		TIMBER FLOOR - DIAGONAL & STRAIGHT LAY CONTRACTOR TO SUPPLY. B3 TO APPROVE SAMPLE.
FF 04		ALTRO SAFETY FLOORING TUNDRA K30500 WR 153/A 1M239/LRV52
FF 05		WC TILE 450MM X 450MM CERAMIC TILE 3DGL482 'LEATHER' SYMMETRY RANGE BY SOLUS CERAMICS

N.B.
PLEASE REFER TO DRAWING NO. 986-321
FOR FURTHER FLOOR DETAILS

THIS DRAWING IS UNDER COPYRIGHT AND NO PORTION SHOULD BE USED WITHOUT PRIOR CONSENT. USE FIGURED DIMENSIONS ONLY. ALL FIGURED DIMENSIONS SHOWN ARE TAKEN FROM PROVIDED SURFACES. ALL DIMENSIONS AND LEVELS MUST BE CHECKED ON SITE AND ANY INCONSISTENCIES REPORTED IMMEDIATELY TO B3 PRIOR TO PUTTING WORKS IN HAND.

REVISIONS:

CODE	DATE	DESCRIPTION

B3 Designers Ltd
Studio 502, Meridian Wharf
75 Waterloo Road
London, E1 6 2US
Tel: +44 (0)20 7729 8111
Fax: +44 (0)20 7729 8124

PROJECT NO: 986
CLIENT/PROJECT: LAS IGUANAS BLACKPOOL
SITE ADDRESS:
66-74 PROMENADE
2-4 CHURCH STREET
BLACKPOOL
FY11 1HH

DATE: 01/07/2015
DRAWN: LP
CHECKED: MB
SCALE: Scale 1:50 @ A1

TITLE:
FLOORING PLAN

STATUS:
TENDER

DWG. NO:
986-104

1 FLOORING PLAN
Scale: 1:50 @ A1 1:100 @ A3

LAS IGUANAS BLACKPOOL

Lighting Plan



NOTE:
TYPE J - SURFACE MOUNTED LINEAR LUMINAIRE TO BAR WORKING - FINAL DETAIL TBC
TYPE M - SURFACE MOUNTED LINEAR LUMINAIRE TO BAR GANTRY - FINAL DETAIL TBC
TYPE N - SURFACE MOUNTED LINEAR LUMINAIRE TO BAR WORK/LEIT DETAIL - FINAL DETAIL TBC
TYPE P - SURFACE MOUNTED LINEAR LUMINAIRE TO BAR BOTTLE SHELF - FINAL DETAIL TBC

NOTE: LIGHTING TO BACK OF HOUSE TBC

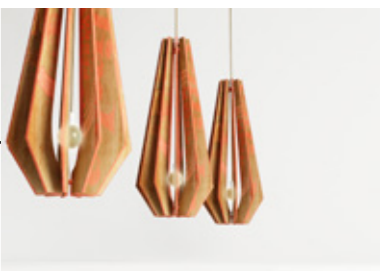
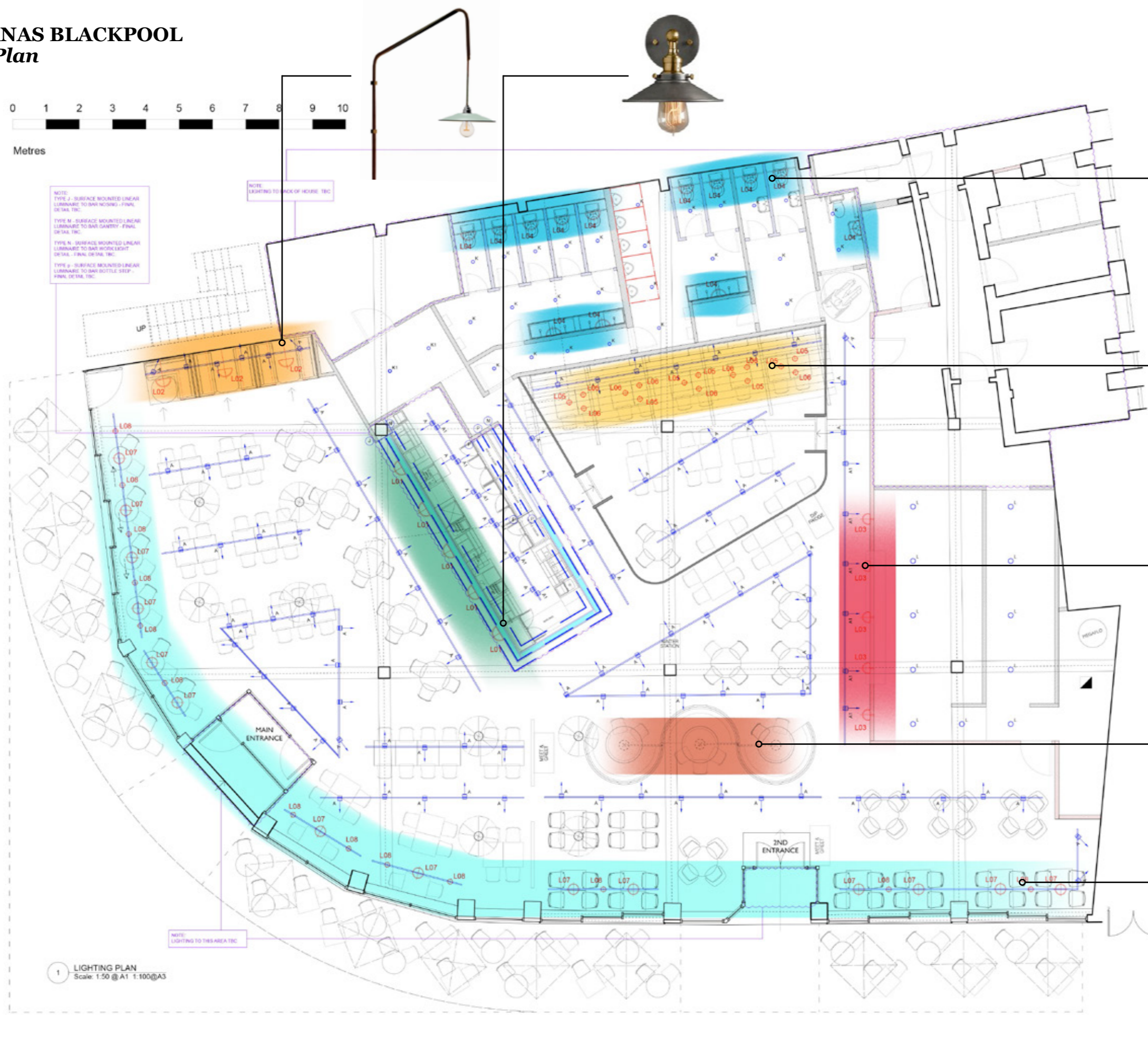
UP

MAIN ENTRANCE

2ND ENTRANCE

NOTE: LIGHTING TO THIS AREA TBC

1 LIGHTING PLAN
Scale: 1:50 @ A1 1:100 @ A3



FF&E SCHEME



**DYKE & DEAN SHADE
BESPOKE ARM**



**NUD
TERRACOTTA BULB**



**INCIPIIT LAB
TULL PENDANT**



DIXIE CHAIR



TAGG CHAIR



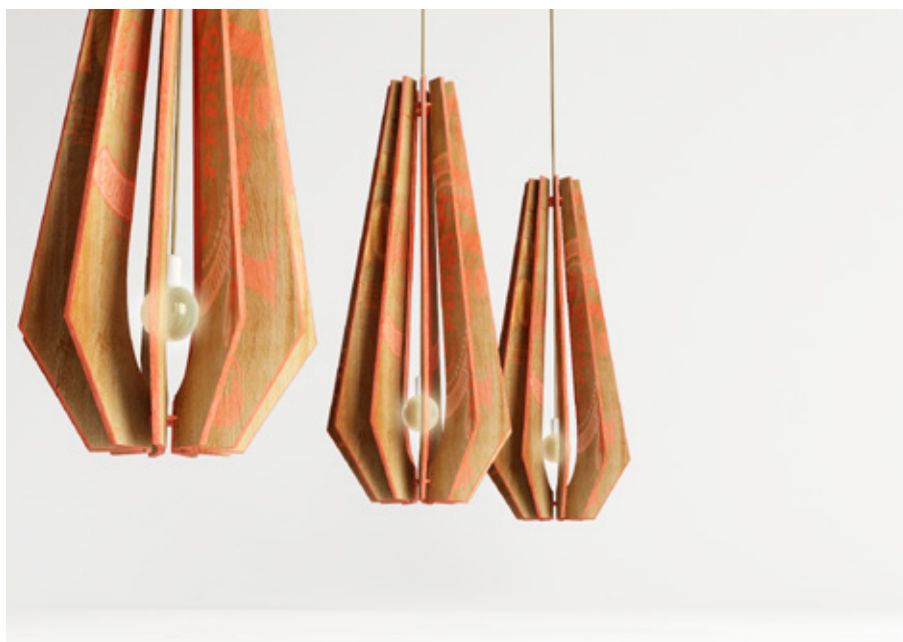
**INDUSTVILLE
BROOKLYN SCONCE**



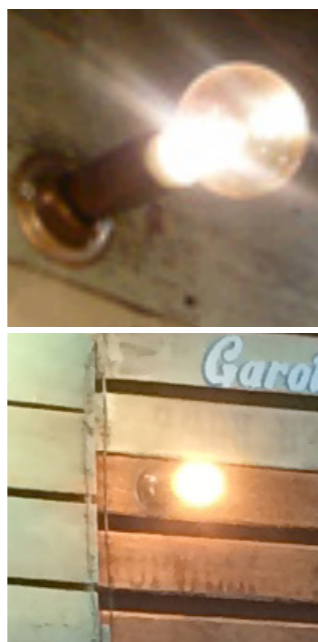
**HOLLOWAYS OF LUDLOW
OVAL BULKHEAD**



STRIKE BAR STOOL



**BANQUETTE FEATURE FIN LIGHTS
BESPOKE**



**SILVER FINISH WALL LIGHT
LIGHTING ENTERPRISES**



**FRAMA BLACK CHROME
ROCKET ST GEORGE**

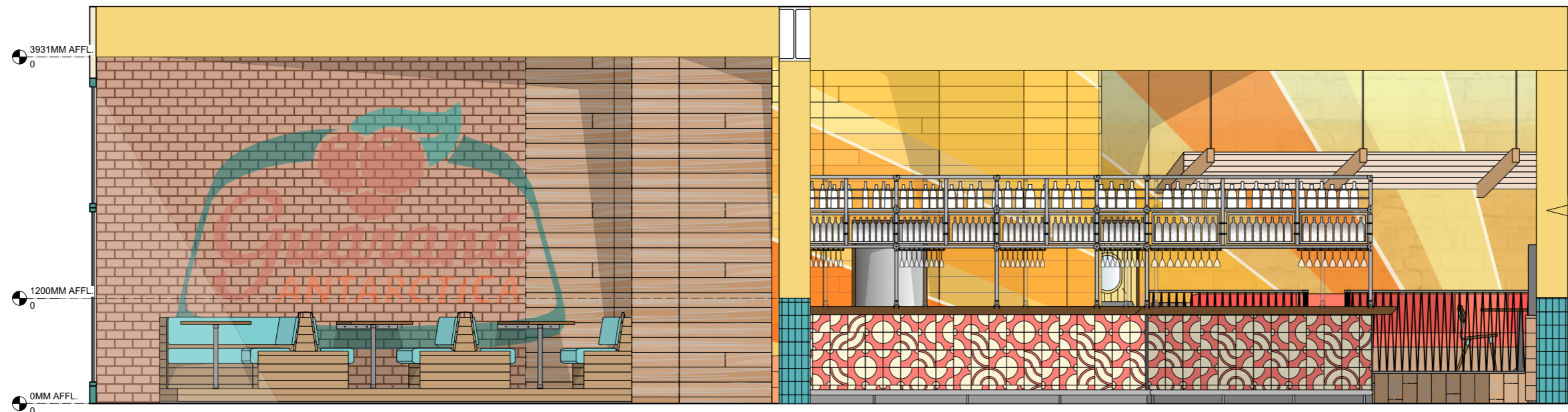


**JAR PENDANT
CHANTELLE**

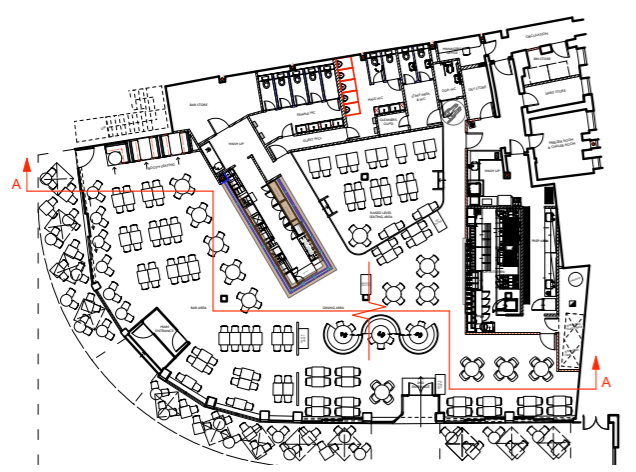
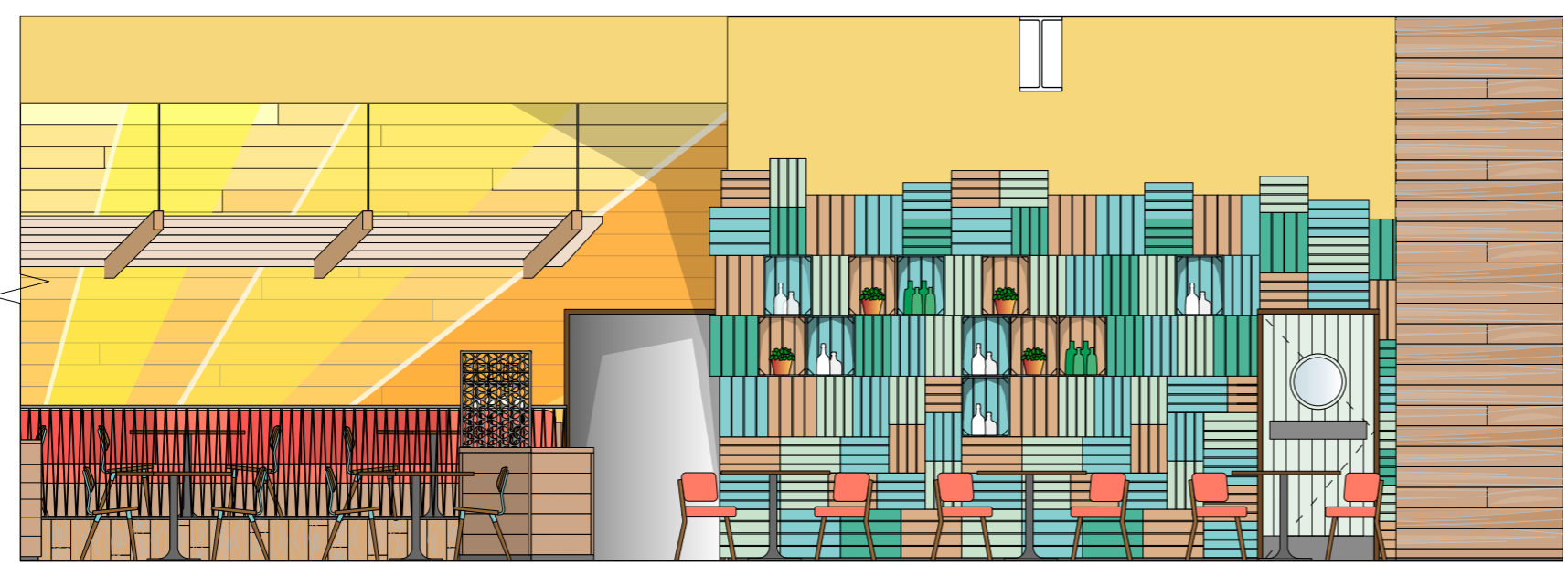


DOLL CHAIR

ELEVATIONS

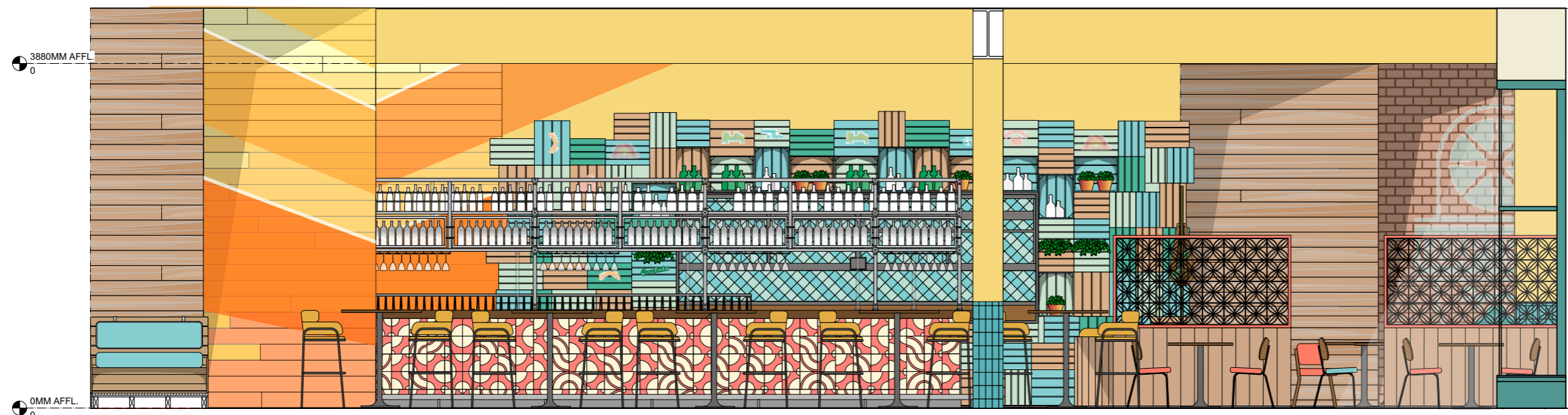


1 ELEVATION AA
1:25 @ A1 1:50 @ A3

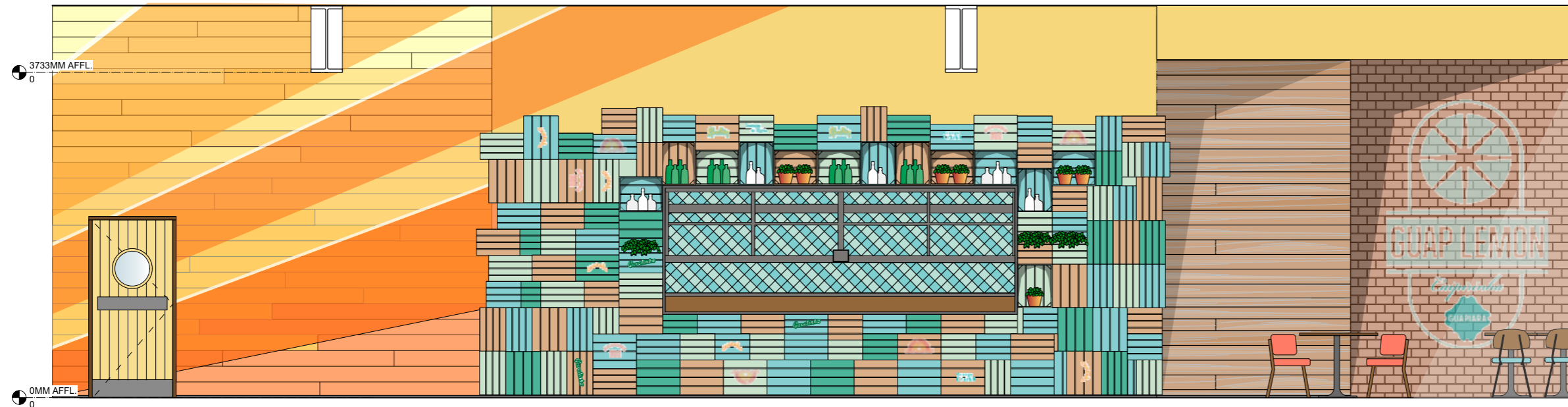


200 KEY PLAN
1:200 @ A1 NTS @ A3

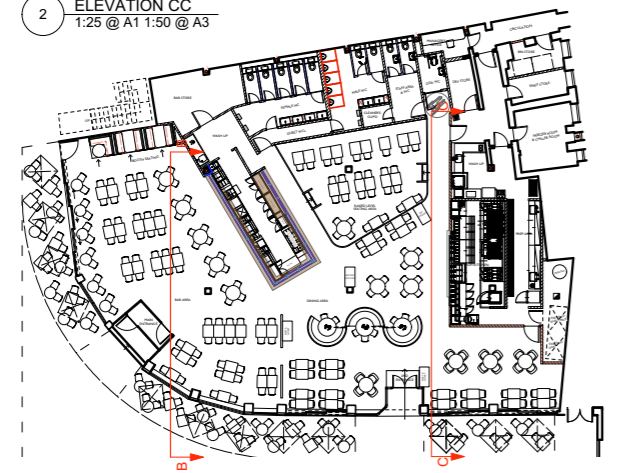
ELEVATIONS



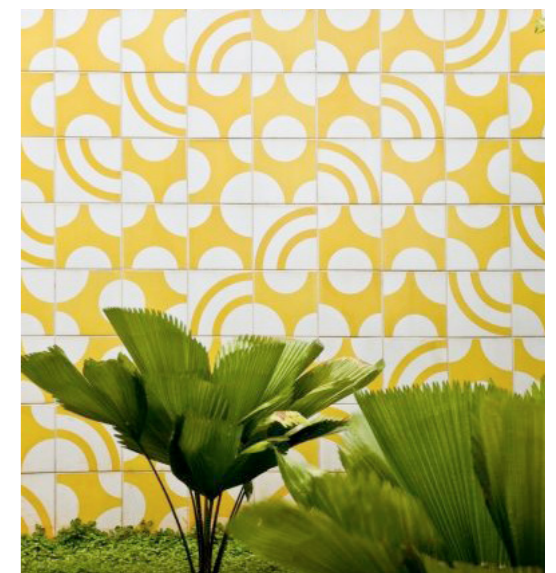
1 ELEVATION BB
1:25 @ A1 1:50 @ A3



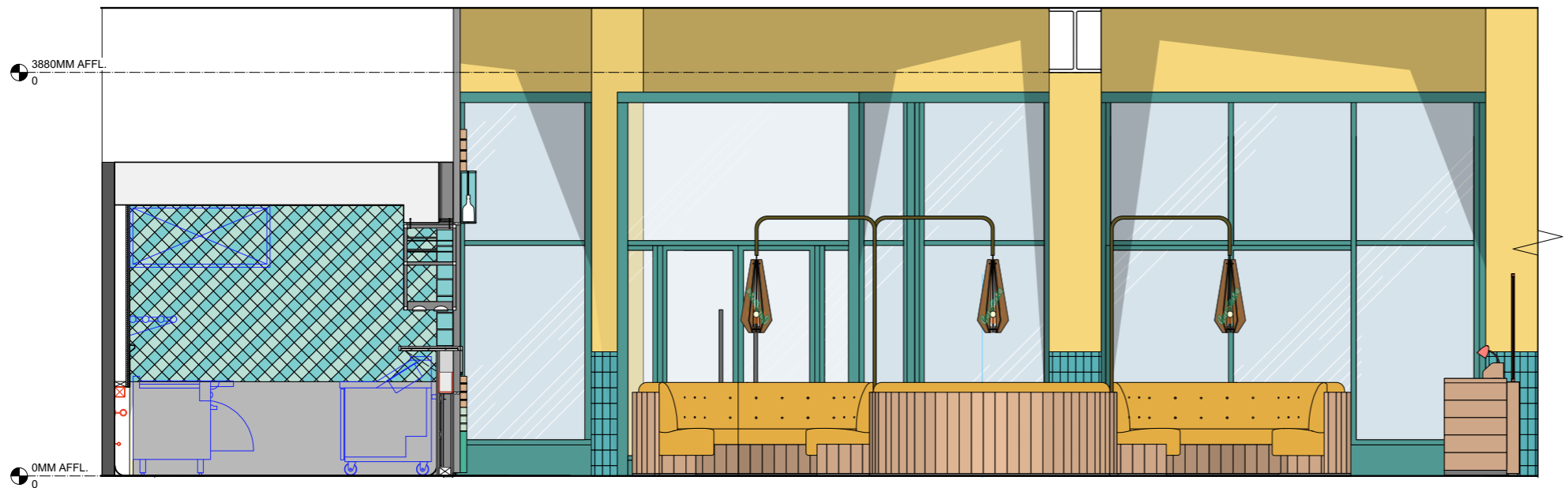
2 ELEVATION CC
1:25 @ A1 1:50 @ A3



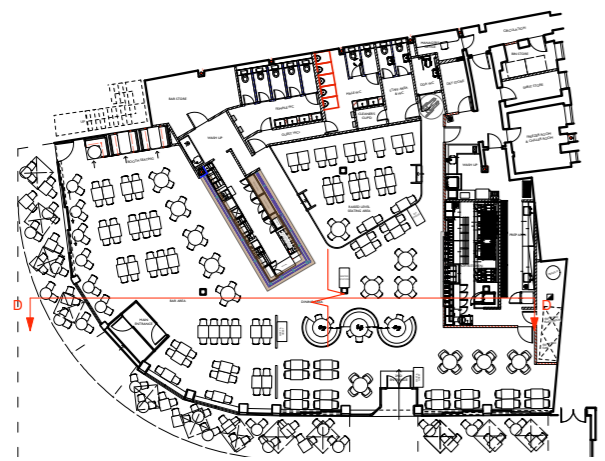
201 KEY PLAN
1:200 @ A1 NTS @ A3



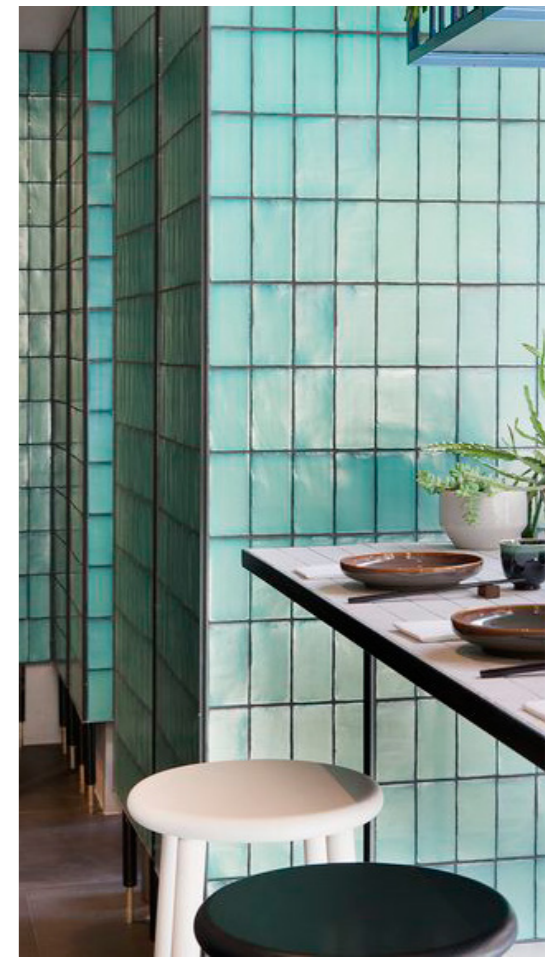
ELEVATIONS



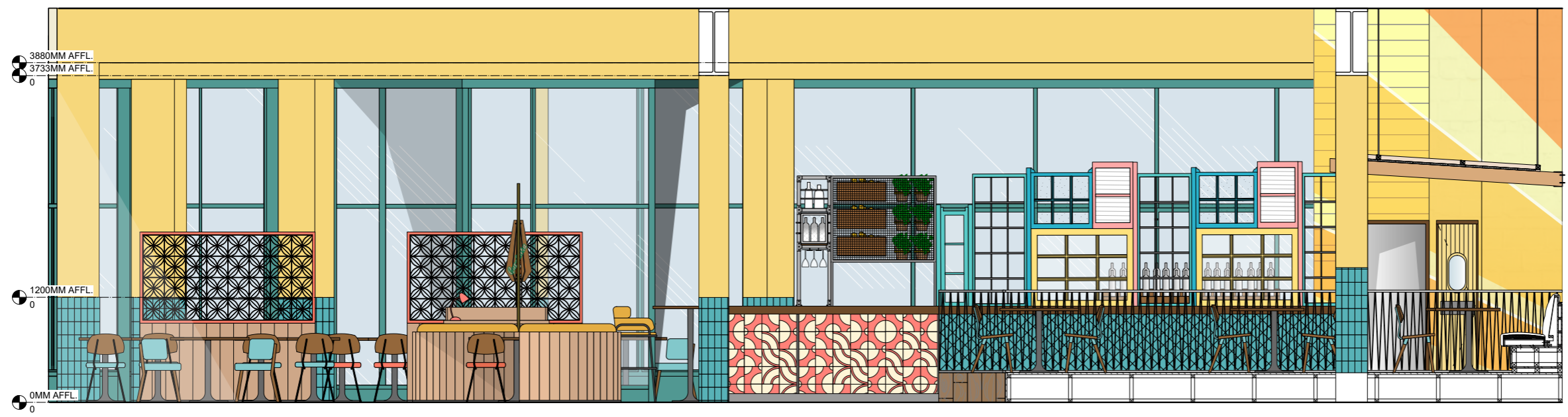
1 ELEVATION DD
1:25 @ A1 1:50 @ A3



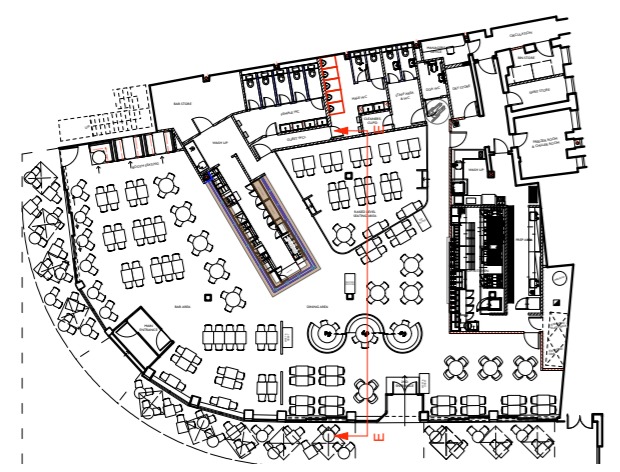
202 KEY PLAN
1:200 @ A1 NTS @ A3



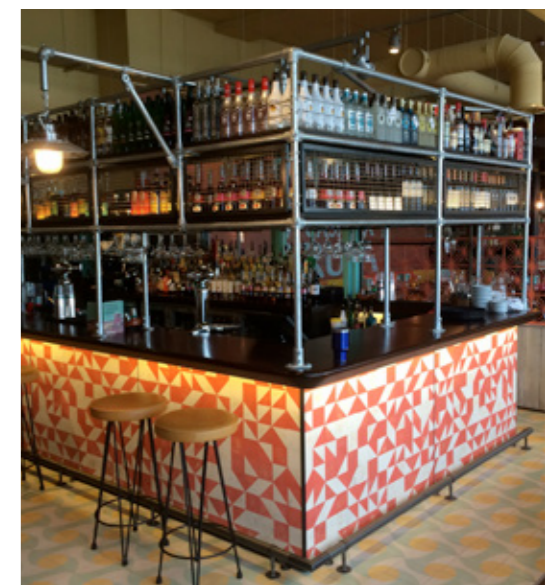
ELEVATIONS



1 ELEVATION EE
1:25 @ A1 1:50 @ A3



203 KEY PLAN
1:200 @ A1 NTS @ A3



AXONOMETRIC VIEW

